

PERFORMANCE. PRICE. TECHNOLOGY.

EDGEFILE® X7

Excellent Strength
and Flexibility

EdgeEndo's Leading Proprietary
Global Platform: Most recognized
and proven solution!



EDGEENDO®

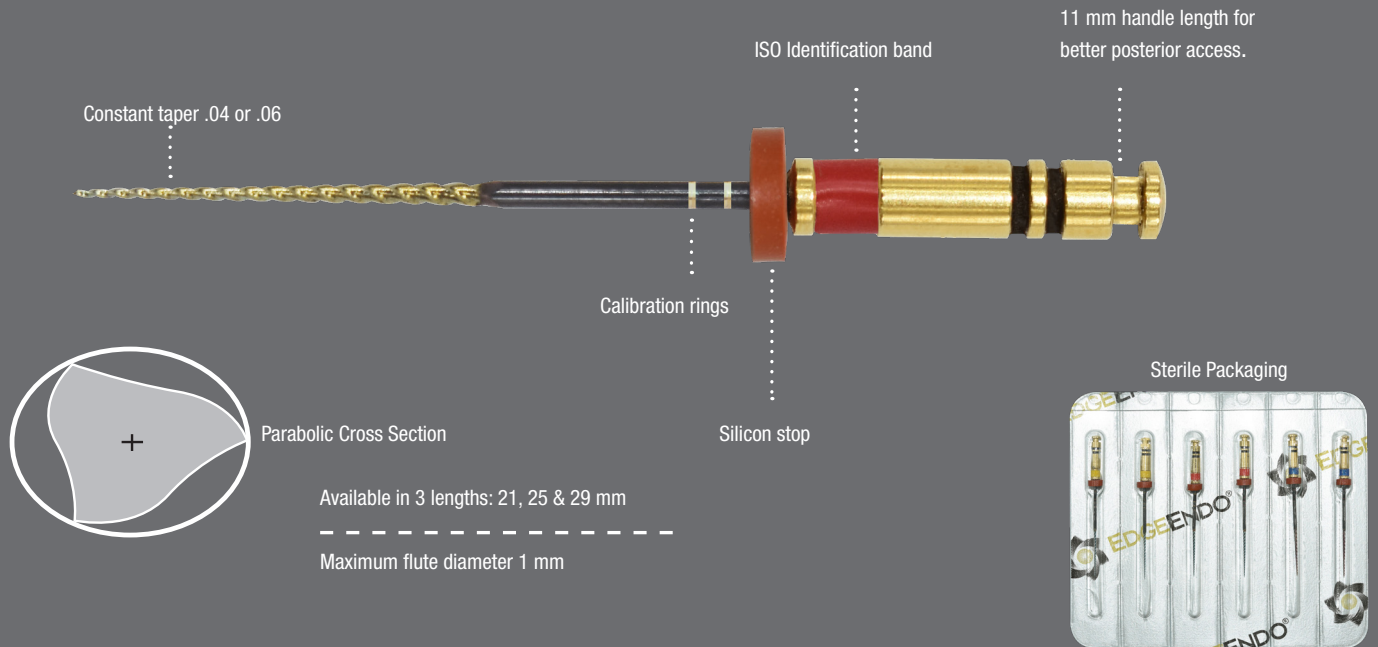


Scan for Digital
X7 Brochure

PERFORMANCE.PRICE.

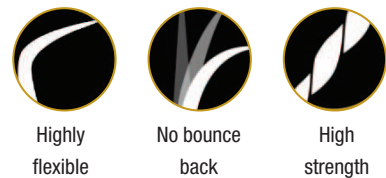
EDGEFILE[®] X7

Heat Treated FireWire™ NiTi



Heat Treated FireWire™ NiTi

FireWire™ NiTi alloy is an innovation in file metallurgy. It makes our files more flexible and significantly increases resistance to cyclic fatigue. FireWire™ NiTi enables EdgeEndo® files to not “bounce back”, preserving canal anatomy, and carefully follows the canal as they shape.*



Scan for more info
on EDGE technology

*Based on resistance cyclic testing as shown on the FireWire NiTi Strength Graph:<http://edgeendo.com/comparative-study-of-cyclic-fatigue-resistance/> and price comparisons vs retail price. For more information, please visit www.edgeendo.com/matter-of-temperature/



EDGEENDO[®]

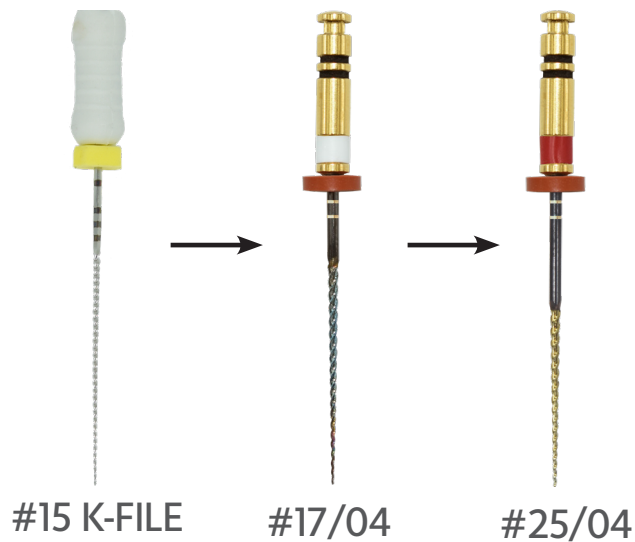
ORDER NOW

EDGEENDO.COM

TECHNOLOGY

EDGEFILE® X7

Simplified Technique



Clockwise rotation
Speed 300 to 500 rpm
Torque setting 250 to 410 g/cm

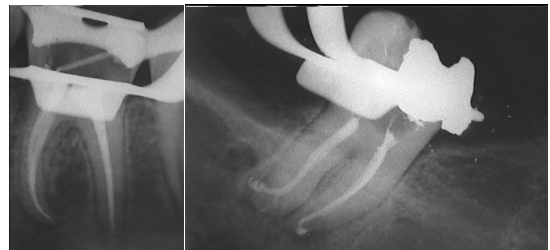
Simplified Technique Guide

1. Create straight line access to canal orifices.
2. Locate canals and explore using stainless steel hand instruments. Minimum size #15K file to working length recommended prior to rotary file use.
3. Irrigate before each hand or rotary file.
4. Use #17/04 file in one or more passes, alternating with small-sized hand files if necessary, until working length is reached. If more coronal flare is desired it can be achieved by incorporating the EdgeGlidePath file used in a brushing motion.
5. Use #25/04 to working length passively; if instrument has not reached working length use additional shaping instrument #20/04 to working length.
6. If #25/04 reached working length with minimal resistance or if clinician desires a larger apical shape additional instruments can be used (#30, #35, #40, etc).

*This technique is intended to be used as a guide only

“In my opinion, the X7 is the best rotary file system for minimally invasive endodontic therapy. The proprietary heat treatment and reduced maximum flute diameter allow for improved efficiency and safety in complex cases.”

-Prof. Gianluca Gambarini



EDGEENDO®

ORDER NOW

EDGEENDO.COM

EDGEFILE® X7

EdgeEndo's leading proprietary global file platform

- Proprietary heat treatment process
- FireWire NiTi™ Alloy improves strength and flexibility*
- Available in .04 and .06 Constant Taper
- Variable Pitch
- Maximum flute diameter 1mm allows for minimally invasive preparation
- Parabolic Cross Section non cutting tip
- Maximizes file cutting efficiency
- Electropolished file
- Increases sharpness and strength
- Reduced handle length for increased posterior access
- ISO tip size 17-45
- Available lengths: 21, 25 & 29 mm

		Length					
Tip Size	Taper Size	21 mm	25 mm	29 mm			
6-Pack STERILE							
X7	17	04	9885267	9885268	9885269		
		06	9885270	9885271	9885272		
	20	04	9885273	9885274	9885275		
		06	9885276	9885277	9885278		
	25	04	9885279	9885280	9885281		
		06	9885282	9885283	9885284		
	30	04	9885285	9885286	9885287		
		06	9885288	9885289	9885290		
	35	04	9885291	9885292	9885293		
		06	9885294	9885295	9885296		
	40	04	9885297	9885298	9885299		
		06	9885300	9885301	9885302		
	45	04	9885303	9885304	9885305		
		06	9885306	9885307	9885308		
	EdgeFile® X7 Assorted Packs		20, 25, 30	04	9885309	9885310	9885311
			20, 25, 30	06	9885312	9885313	9885314

EDGEGLIDEPATH™

HEAT-TREATED FIREWIRE™ NITI

- Alternative to ProGlider®
- Replacing as many as 8 instruments to create a glidepath faster
- Replaces #15, 20, 25, 30 & 35 hand files in a step-back technique and a #1, 2 & 3 Gates Glidden

		Length		
Tip Size	Taper Size	21 mm	25 mm	31 mm
4-Pack STERILE				
19		9888387	9888388	9888389

EDGECORE™

- Alternative to Gutta Core™.

5 Pack + 1 Verifier

Family	Tip Size	Sku Number
X7	20	9885347
	25	9885348
	30	9885349
	35	9885350
	40	9885351
	45	9885352
	50	9885353



EDGEFILL™

- Alternative to Thermafill®.

6-Pack

Family	Tip Size	Sku Number
X7	20	9885354
	25	9885355
	30	9885356
	35	9885357
	40	9885358
	45	9885359
	50	9885360



GUTTA PERCHA POINTS

60-Pack

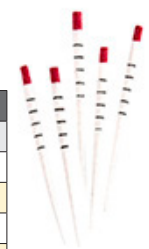
Family	Tip Size	Taper Size	Sku Number
EdgeFile® .04			
EdgeFile® GP .04	15	04	9885315
	20	04	9885316
	25	04	9885317
	30	04	9885318
	35	04	9885319
	40	04	9885320
	45	04	9885321
50	04	9885322	
EdgeFile® .06			
EdgeFile® GP .06	15	06	9885323
	20	06	9885324
	25	06	9885325
	30	06	9885326
	35	06	9885327
	40	06	9885328
	45	06	9885329
50	06	9885330	



PAPER POINTS

60-Pack

Family	Tip Size	Taper Size	Sku Number
EdgeFile® .04			
EdgeFile® PP .04	15	04	9885331
	20	04	9885332
	25	04	9885333
	30	04	9885334
	35	04	9885335
	40	04	9885336
	45	04	9885337
50	04	9885338	
EdgeFile® .06			
EdgeFile® PP .06	15	06	9885339
	20	06	9885340
	25	06	9885341
	30	06	9885342
	35	06	9885343
	40	06	9885344
	45	06	9885345
50	06	9885346	



EDGEENDO®

ORDER NOW

EDGEENDO.COM